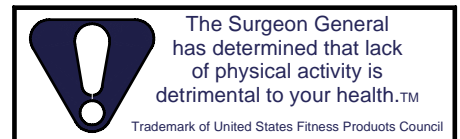
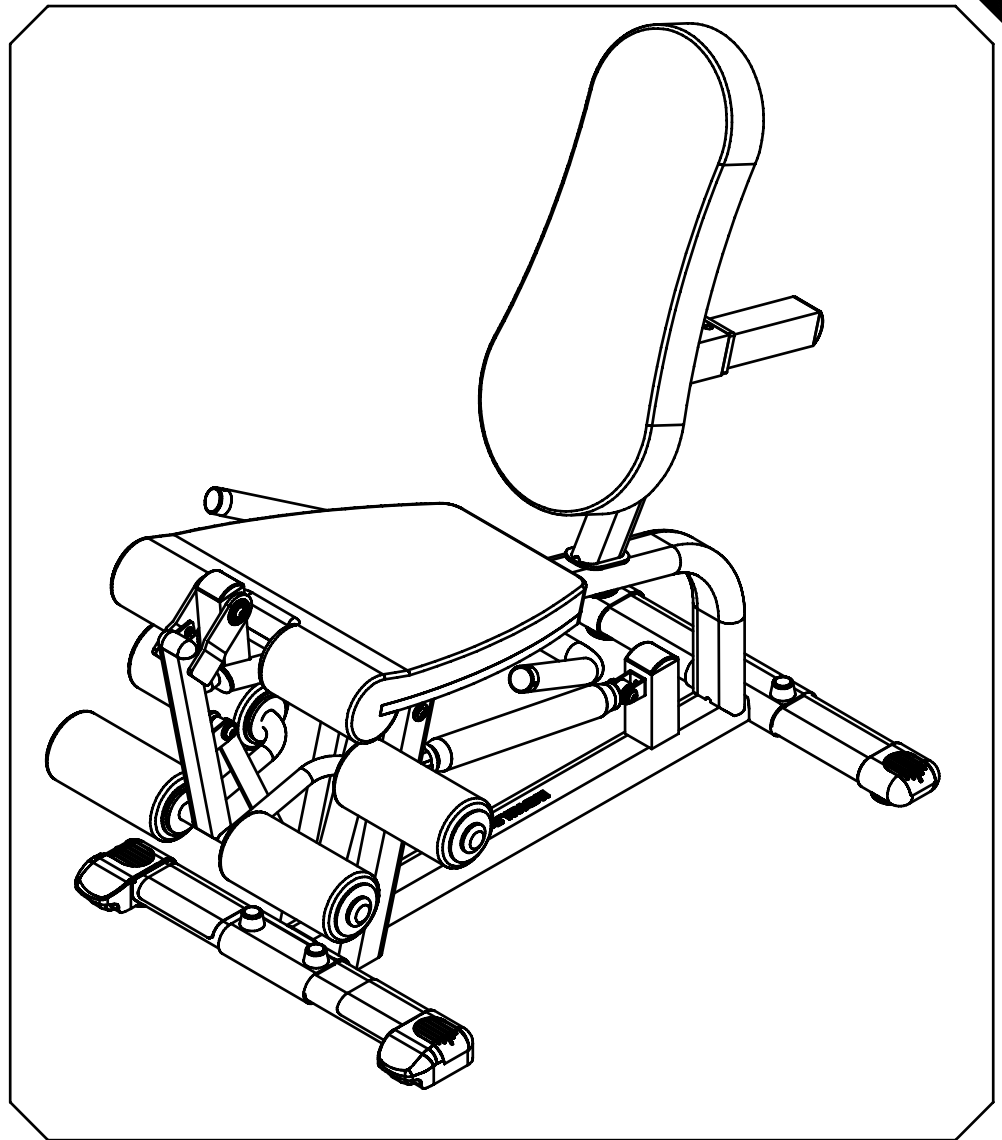


SteelFlex



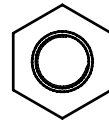
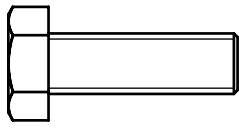
THERE IS A RISK ASSUMED BY INDIVIDUALS WHO USE THIS TYPE OF EQUIPMENT. TO MINIMIZE RISK, YOU MUST FOLLOW THESE RULES:

1. Inspect equipment before each workout. Check that all nuts, bolts, screws and pop pins are in place and fully tightened. Also, before use, check cylinders for leaking. Replace all worn parts immediately. Never use machine if any parts are damaged or missing. Failure to follow these rules may result in serious injury.
2. Keep clear of the cylinder and all moving parts when the machine is in use.
3. Exercise with care. Perform your exercises at a smooth moderate pace; never perform jerky or uncoordinated movements that may cause injury.
4. It is recommended that you should workout with a training partner.
5. Do not allow children or minors to play on or around this equipment.
6. If unsure of proper use of equipment, call your local distributor.
7. **WARNING:** Consult your physician before starting your exercise program. For your own safety do not begin any exercise program without proper instruction.

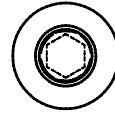
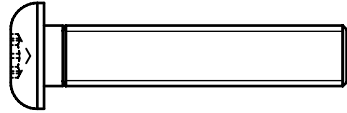
CLE-500 OWNER'S MANUAL

CLE-500 ASSEMBLY INSTRUCTIONS

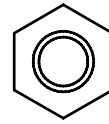
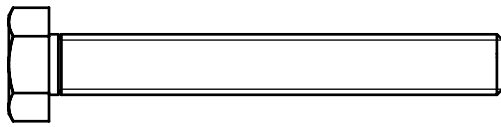
HARDWARE ILLUSTRATION



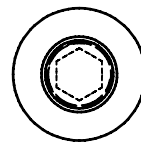
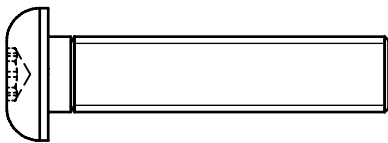
(A1)HEX BOLT M8X25L PARTIAL THREAD QTY.4



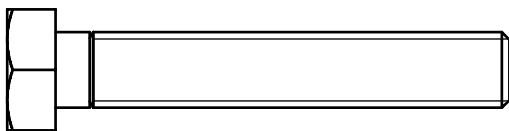
(A2)ROUND ALLEN HEAD M8x40L PARTIAL THREAD QTY.2



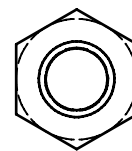
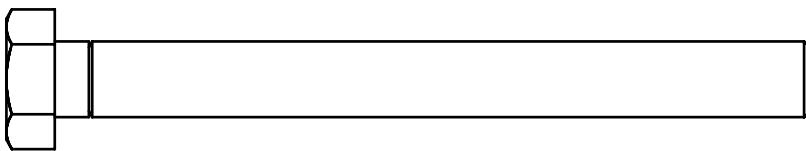
(A3)HEX BOLT M8X60L PARTIAL THREAD QTY.2



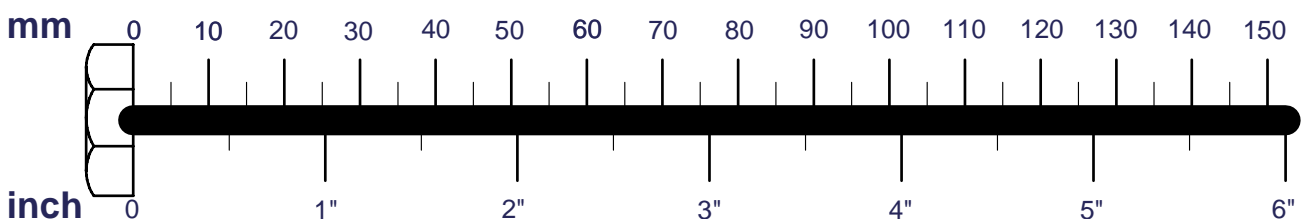
(A4)ROUND ALLEN HEAD M10x45L PARTIAL THREAD QTY.2



(A5)HEX BOLT M10X60L PARTIAL THREAD QTY.4

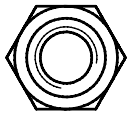


(A6)HEX BOLT M10X100L PARTIAL THREAD QTY.2



CLE-500 ASSEMBLY INSTRUCTIONS

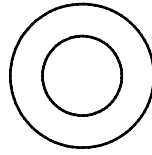
HARDWARE ILLUSTRATION



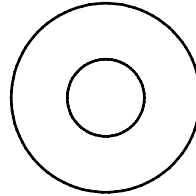
(B1) NYLON LOCK NUT M8 QTY.2



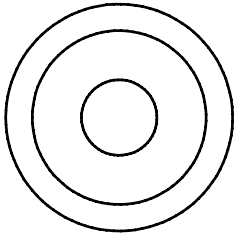
(B2) NYLON LOCK NUT M10 QTY.8



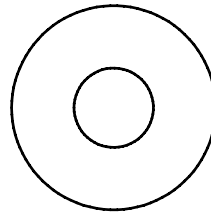
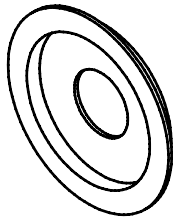
(C5) M10(I.D.) FLAT WASHER Ø19X2T QTY.4



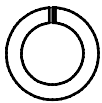
(C6) M10(I.D.) FLAT WASHER Ø25X2T QTY.4



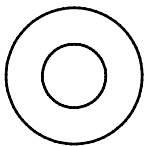
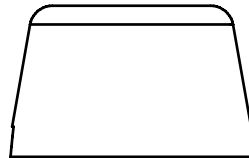
(C1) 3/8" ROUND END CAP WASHER QTY.4



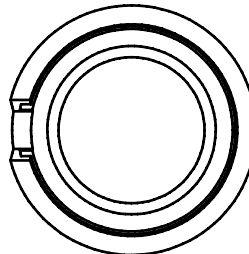
(C7) M10(I.D.) FLAT WASHER Ø27X2T QTY.4



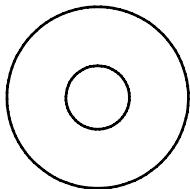
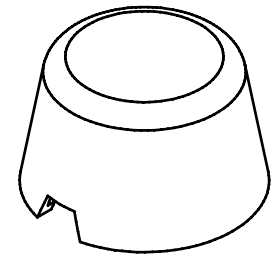
(C2) M8 SPRING WASHER QTY.6



(C3) M8(I.D.) FLAT WASHER Ø18X1.5T QTY.4



(C8) 1/2" BOLT CAP(9212-024) QTY.4



(C4) M8(I.D.) FLAT WASHER Ø24X1.5T QTY.6



mm

0 10 20 30 40 50 60 70 80 90 100 110 120 130 140 150

inch

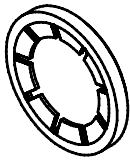
0 1" 2" 3" 4" 5" 6"

CLE-500 ASSEMBLY INSTRUCTIONS

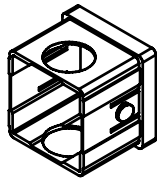
HARDWARE ILLUSTRATION

D1. Ø1" Flat END CAP(8341-033)-----	[4PCS]
D2. 60X50 NYLON BUSHING(9211-033)-----	[2PCS]
D3. 1"X2" END CAP (9211-009)-----	[1PCS]
D4. □50 ROUND END CAP (9211-087)-----	[2PCS]
D5. □45 ROUND END CAP (9211-097)-----	[1PCS]
D6. 30X60 END CAP(9211-139)-----	[1PCS]
D7. 3" NYLON WASHER(9214-008)-----	[8PCS]
D8. Ø60X42H DECK BUFFER (9214-037)-----	[2PCS]
D9. 40X80 ROUND END COVER (9261-070)-----	[2PCS]
D10. 40X80 FOOT CAP (9261-071)-----	[1PCS]
D11. 40X80 FOOT CAP (9261-072)-----	[1PCS]
D12. 95X140L RUBBER PAD(9630-003)-----	[2PCS]

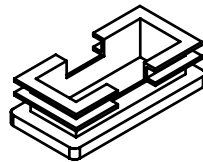
D1



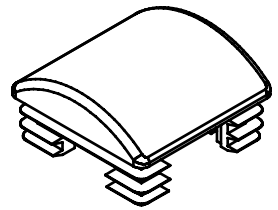
D2



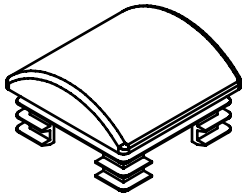
D3



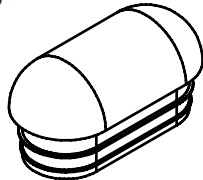
D4



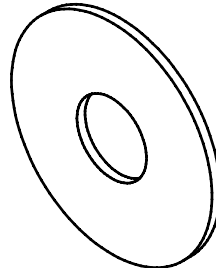
D5



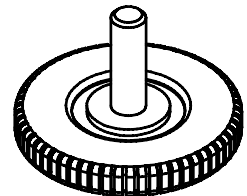
D6



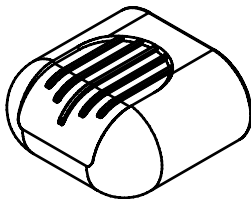
D7



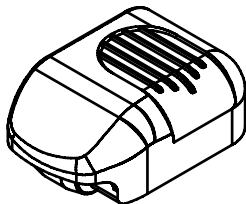
D8



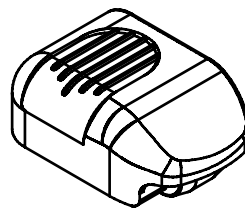
D9



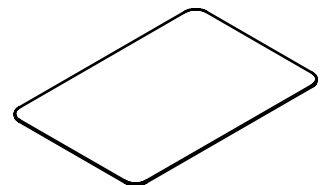
D10



D11



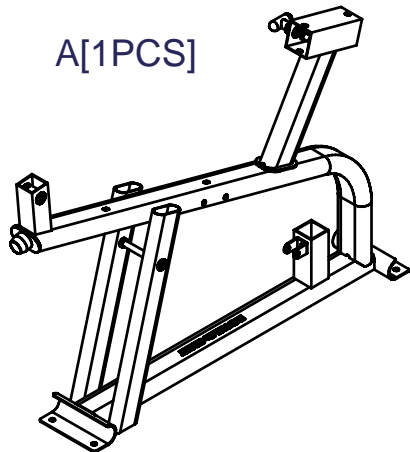
D12



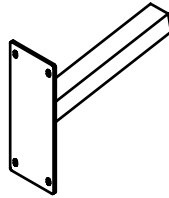
CLE-500 ASSEMBLY INSTRUCTIONS

PARTS ILLUSTRATION SHEET

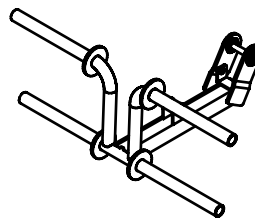
A[1PCS]



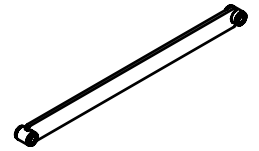
B[1PCS]



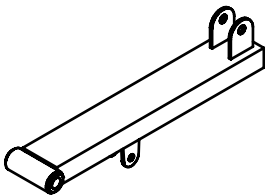
C[1PCS]



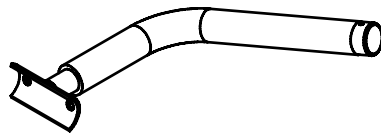
D[1PCS]



E[1PCS]



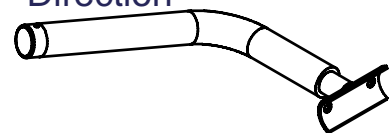
F[1PCS]
6640-007



Direction



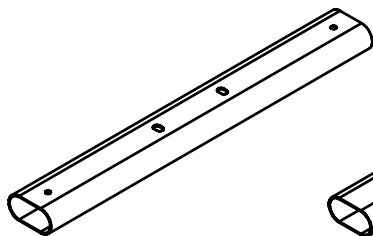
G[1PCS]
6640-008



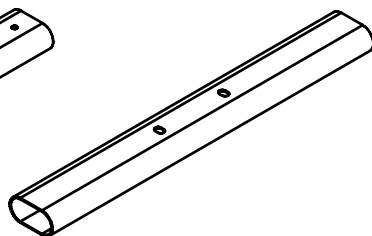
Direction



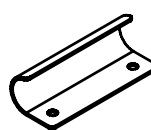
H[1PCS]
5584-K007
40X80X2TX600



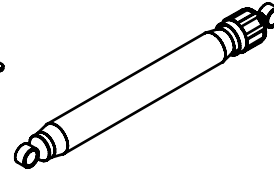
I[1PCS]
5584-K008
40X80X2TX600



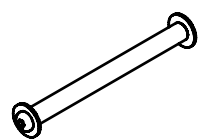
J[2PCS]
8386-101



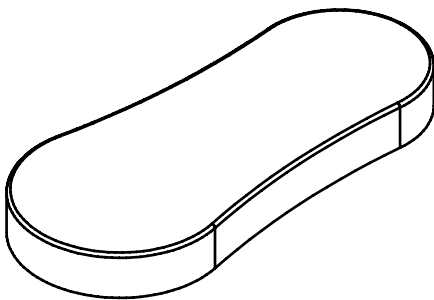
K[1PCS]
8830-017



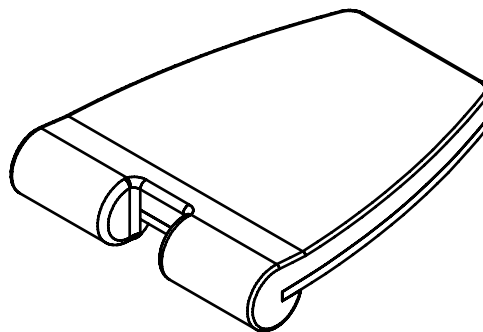
L[1PCS]
8210-123



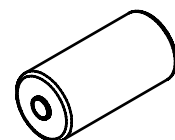
M[1PCS]
9111-064



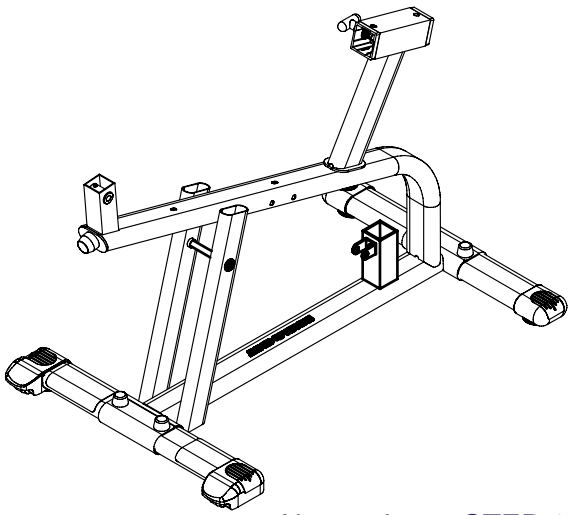
N[1PCS]
9121-065



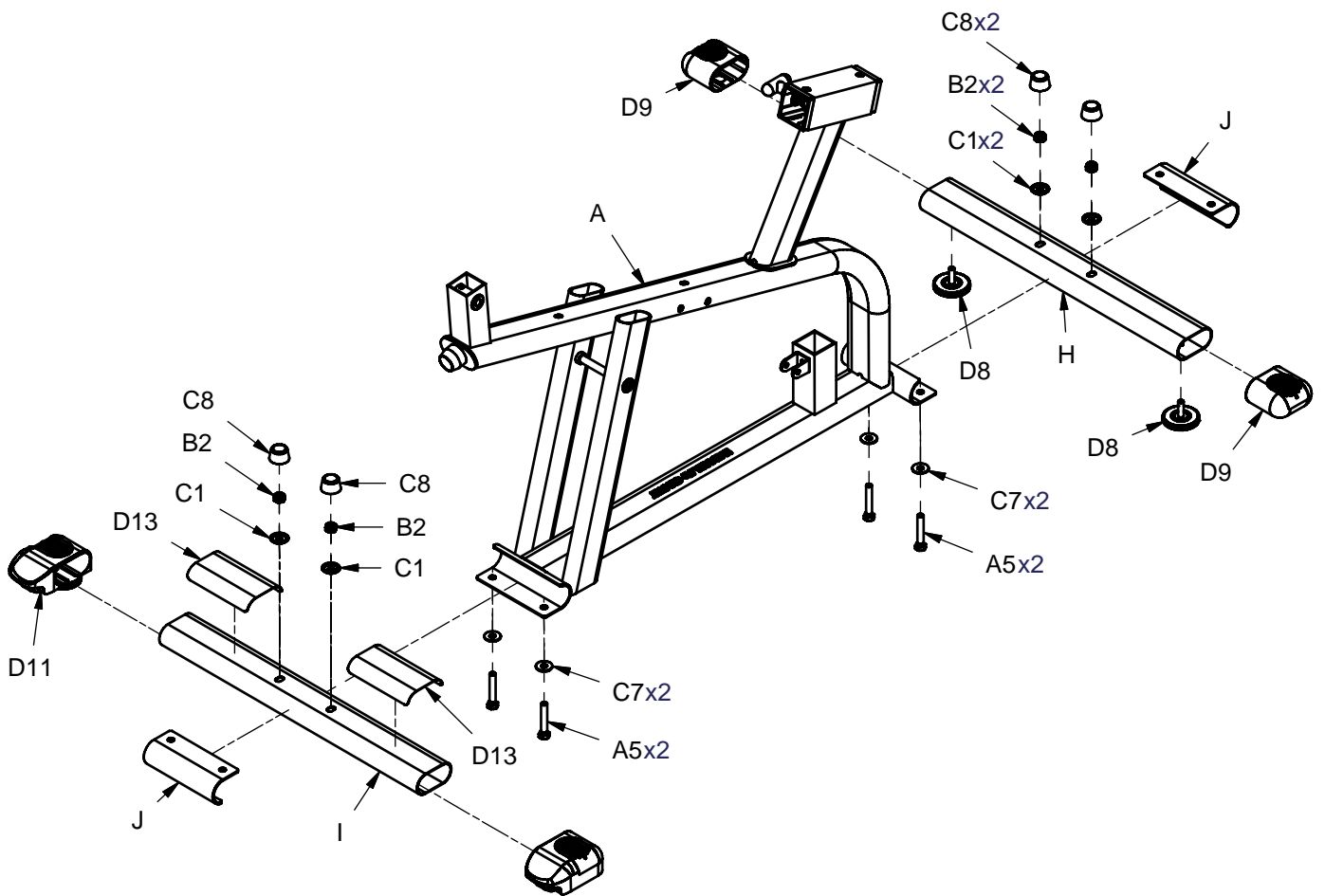
O[4PCS]
9161-049



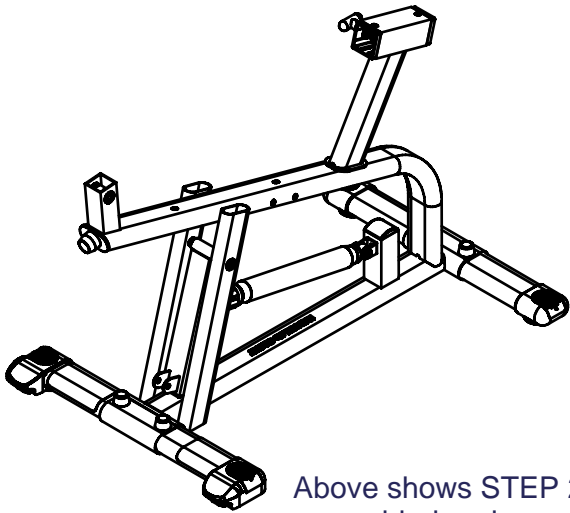
CLE-500 ASSEMBLY INSTRUCTIONS



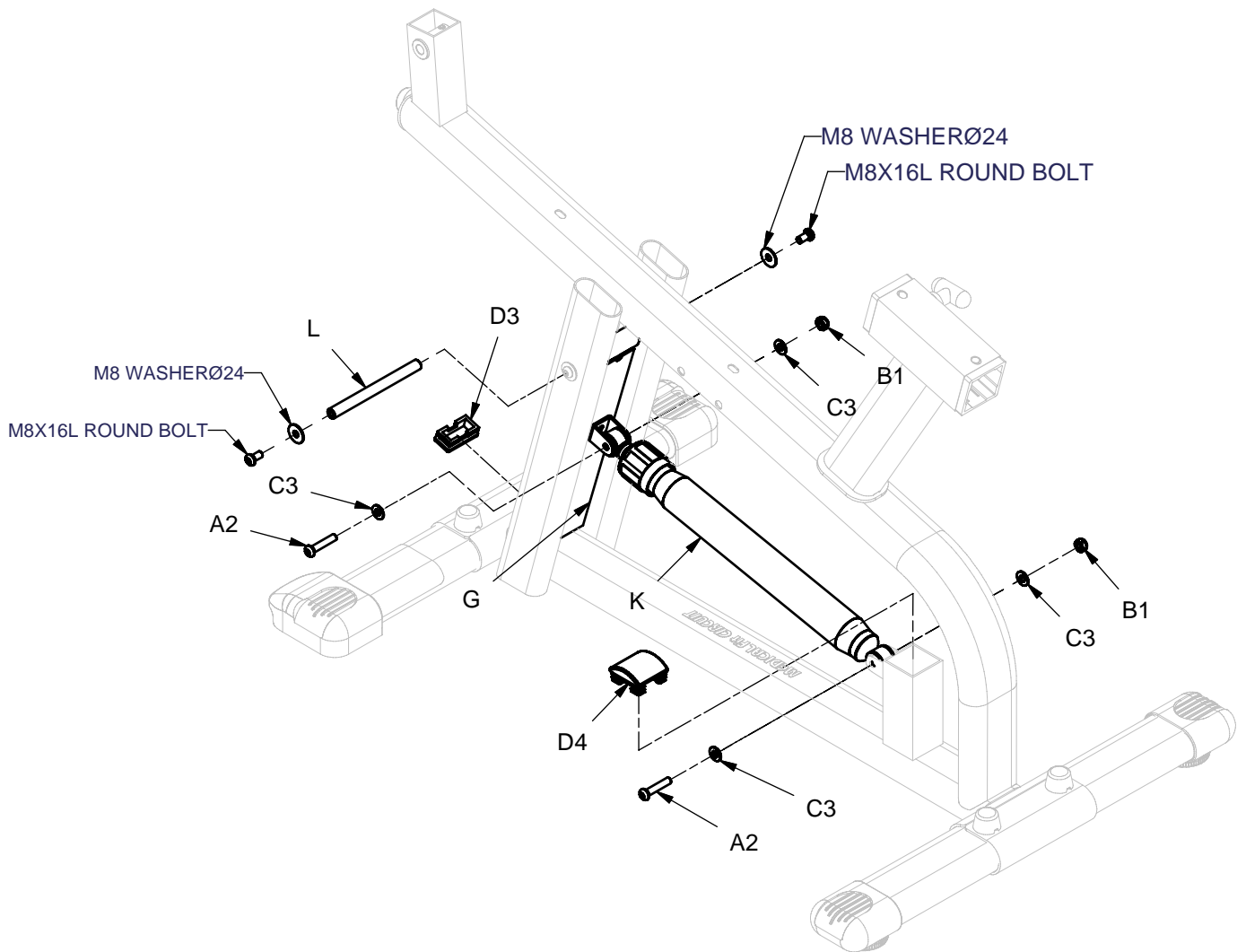
Above shows STEP 1
assembled and completed



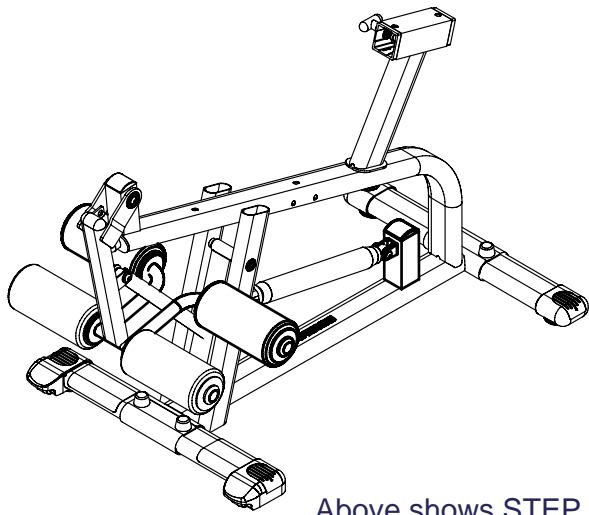
CLE-500 ASSEMBLY INSTRUCTIONS



Above shows STEP 2
assembled and completed

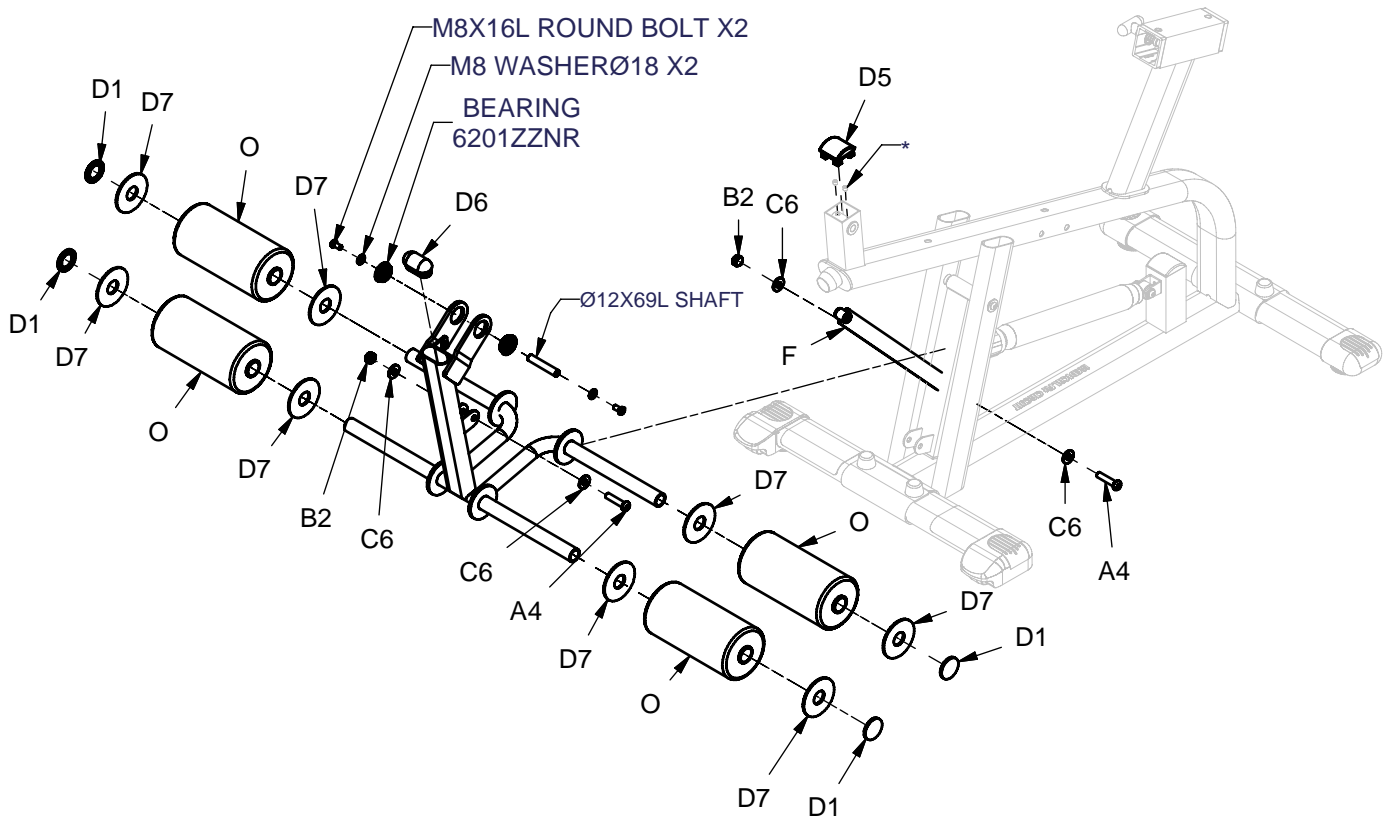


CLE-500 ASSEMBLY INSTRUCTIONS

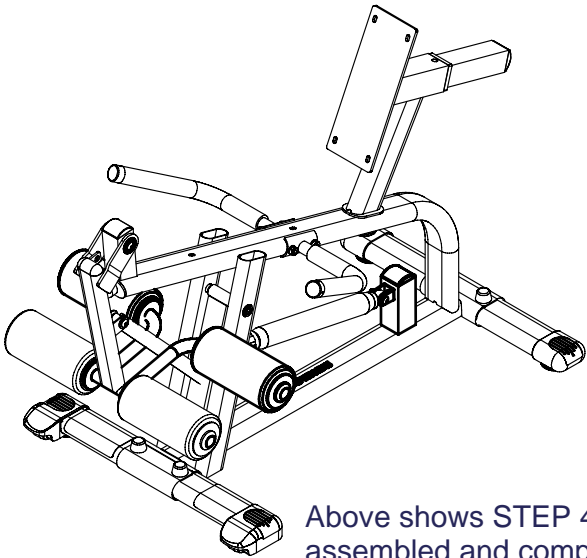


Above shows STEP 3 assembled and completed

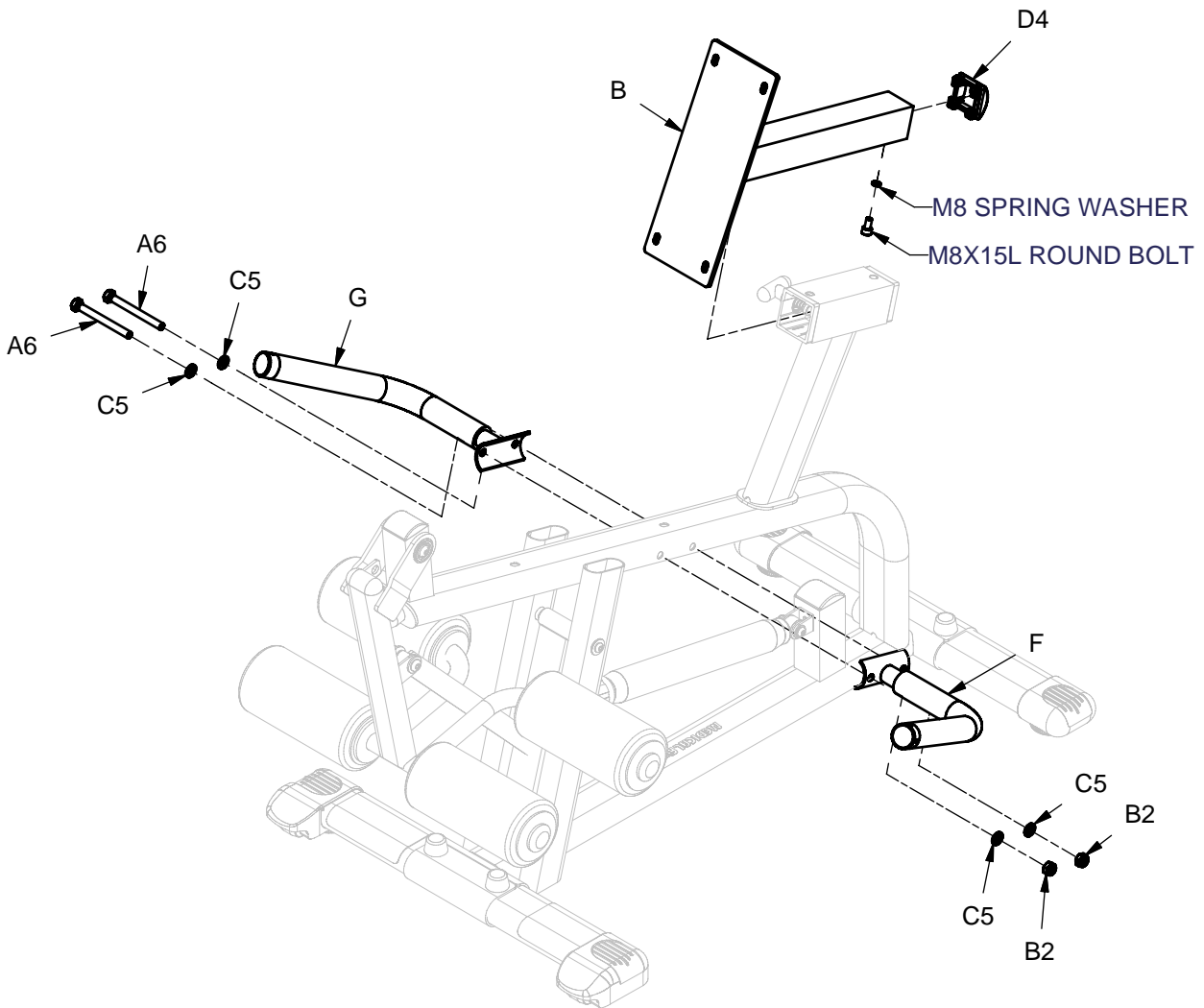
*:NEED TO LOOSEH BOTH ALLEN HEAD BOLT IN ORDER TO REMOVE SHAFT



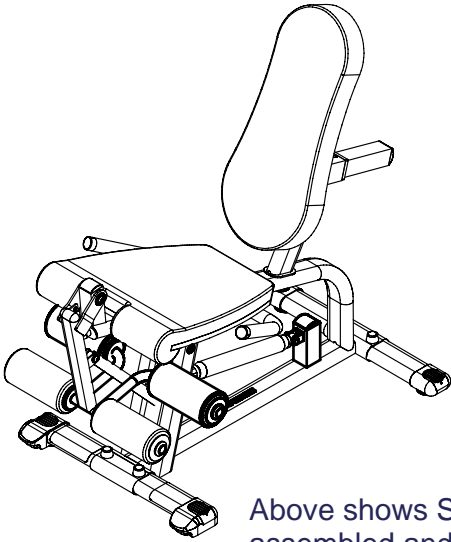
CLE-500 ASSEMBLY INSTRUCTIONS



Above shows STEP 4
assembled and completed



CLE-500 ASSEMBLY INSTRUCTIONS



Above shows STEP 5
assembled and completed

